

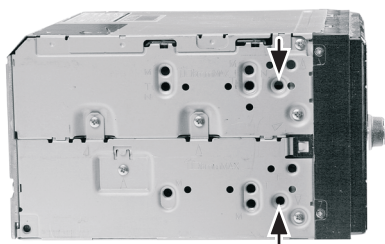


- Remove the 2 screws at the top of the OEM head unit.

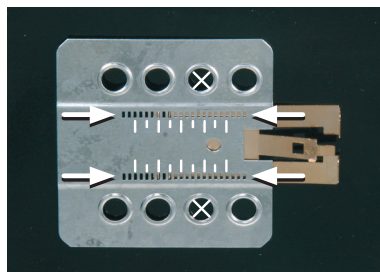
Remove the OEM head unit.



- Place the mounting frame at the dashboard. Push the metal frame into the mounting frame. Fix the mounting frame



Mount the metal brackets with the double DIN head unit



The position of the copper coloured holder can be adjusted to your needs for perfect fit. (see sample)



- Connect all required circuit points and push the double DIN head unit in the metal frame until it snaps in. Place the facia plate on the mounting frame. Reinstall everything in reverse order to finish installation

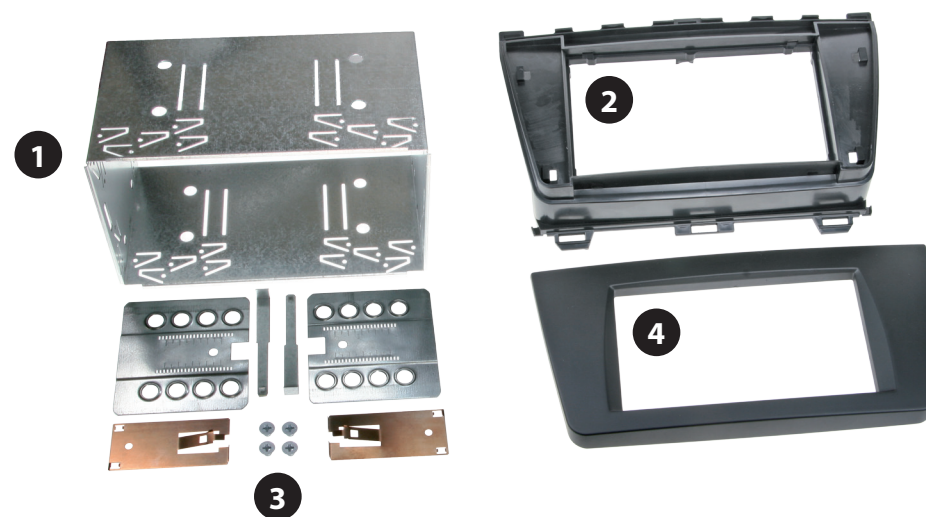


Installation Manual Double DIN Kit

Rubber-Touch: 391170-07

• Mazda 6 (Type GH) 2008->

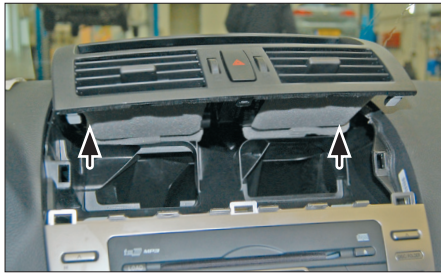
Compatible with double DIN devices



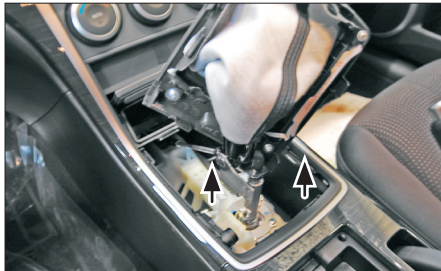
Double DIN Kit contents

- (1) Metal Frame
- (2) Mounting Frame

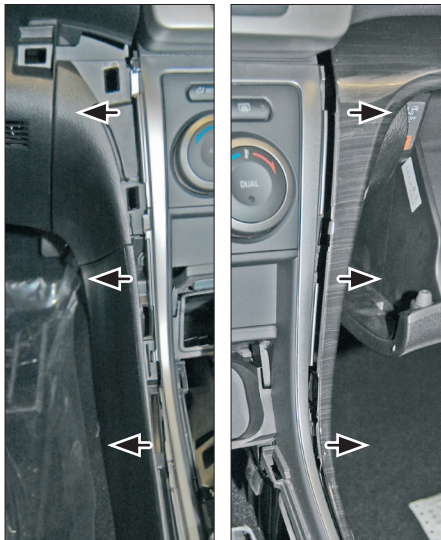
- Installation Kit (3)
- Facia Plate (4)



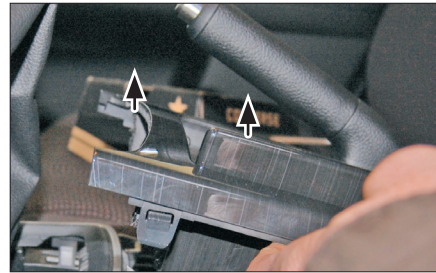
1. Remove the air vent unit above the OEM head unit



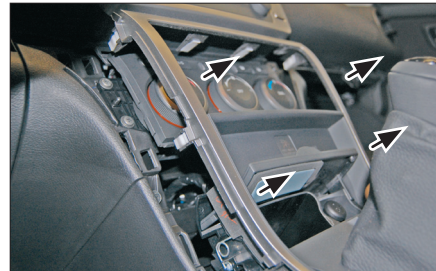
2. Remove the gear shift cover



3. Remove the side panels at the left and right side



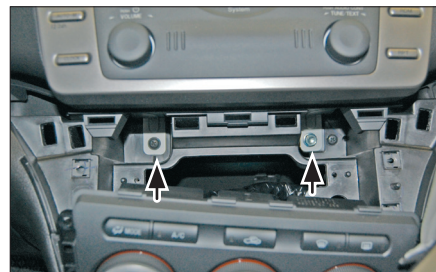
4. Remove the cup holder unit



5. Remove the silver panel of the center console



6. Remove the air condition control unit



7. Remove the screws at the bottom of the OEM head unit.

(there are also two screws at the top, see step 7)